

ecoLENS industry

A very powerful and extremely high efficient LED lighting for warehouse, retail stores and industries.

Available with different optics from narrow to flood beams. Asymmetric version also available.

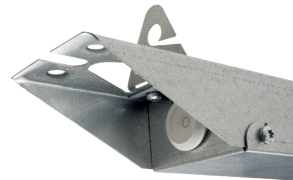
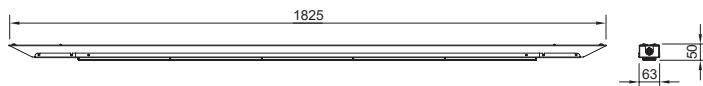
Lumen setting and energy consumption (from 39 - 62 W) to be adjusted for your project before delivery.

7-years LED and driver warranty.

Material	Powder painted steel
Colour temp [K]	3000 / 3500 K or 4000 K
Design LED life	L90 > 50 000 h (T _a 25°)
Driver lifetime	50 000 h
CRI	+80
Initial MacAdam	3 SDCM
Lumen range max	9 500 lm (@ 62 W)
Nominal Voltage	230/240 V, 50 Hz
Form protection	IP21. Class III. CE-approved
Weight	1,9 kg
Connection	5 p connection terminal in each end with 5x2,5 mm ² going through wiring.

Dali On request

Dimensions [mm] 1825 x 63 x 50 mm



Integrated fold-up bracket for suspending on a wire.



High efficiency optics for maximum light control.

Item No.	Description	Reflector /Beam	Painting colour	Energy consumption	Lumen output	Colour temperature, CRI	Amount/Fuse 16 A C-type	Amount/Fuse 10 A C-type
221005 830 10 1001 M	ecoLENS Industry, 830, Galv, 5x2,5 mm ²	Narrow 30°	Galvanized	42-62 W	9 500 lm (62 W)	3000 K, CRI > 80	26	16
221005 830 10 1002 M	ecoLENS Industry, 830, Galv, 5x2,5 mm ²	Medium 60°	Galvanized	42-62 W	9 500 lm (62 W)	3000 K, CRI > 80	26	16
221005 830 10 1003 M	ecoLENS Industry, 830, Galv, 5x2,5 mm ²	Wide 90°	Galvanized	42-62 W	9 500 lm (62 W)	3000 K, CRI > 80	26	16
221005 830 10 1004 M	ecoLENS Industry, 830, Galv, 5x2,5 mm ²	Double Asymmetric	Galvanized	42-62 W	9 500 lm (62 W)	3000 K, CRI > 80	26	16
221005 830 10 1005 M	ecoLENS Industry, 830, Galv, 5x2,5 mm ²	Asymmetric	Galvanized	42-62 W	9 500 lm (62 W)	3000 K, CRI > 80	26	16
221005 830 10 1006 M	ecoLENS Industry, 830, Galv, 5x2,5 mm ²	Flood 110°	Galvanized	42-62 W	9 500 lm (62 W)	3000 K, CRI > 80	26	16
221005 835 10 1001 M	ecoLENS Industry, 835, Galv, 5x2,5 mm ²	Narrow	Galvanized	42-62 W	9 500 lm (62 W)	3500 K, CRI > 80	26	16
221005 835 10 1002 M	ecoLENS Industry, 835, Galv, 5x2,5 mm ²	Medium	Galvanized	42-62 W	9 500 lm (62 W)	3500 K, CRI > 80	26	16
221005 835 10 1003 M	ecoLENS Industry, 835, Galv, 5x2,5 mm ²	Wide	Galvanized	42-62 W	9 500 lm (62 W)	3500 K, CRI > 80	26	16
221005 835 10 1004 M	ecoLENS Industry, 835, Galv, 5x2,5 mm ²	Double Asymmetric	Galvanized	42-62 W	9 500 lm (62 W)	3500 K, CRI > 80	26	16
221005 835 10 1005 M	ecoLENS Industry, 835, Galv, 5x2,5 mm ²	Asymmetric	Galvanized	42-62 W	9 500 lm (62 W)	3500 K, CRI > 80	26	16
221005 835 10 1006 M	ecoLENS Industry, 835, Galv, 5x2,5 mm ²	Flood 110°	Galvanized	42-62 W	9 500 lm (62 W)	3500 K, CRI > 80	26	16
221005 835 10 1002 M	ecoLENS Industry, 840, Galv, 5x2,5 mm ²	Narrow	Galvanized	42-62 W	9 500 lm (62 W)	4000 K, CRI > 80	26	16
221005 835 10 1002 M	ecoLENS Industry, 840, Galv, 5x2,5 mm ²	Medium	Galvanized	42-62 W	9 500 lm (62 W)	4000 K, CRI > 80	26	16
221005 835 10 1003 M	ecoLENS Industry, 840, Galv, 5x2,5 mm ²	Wide	Galvanized	42-62 W	9 500 lm (62 W)	4000 K, CRI > 80	26	16
221005 835 10 1004 M	ecoLENS Industry, 840, Galv, 5x2,5 mm ²	Double Asymmetric	Galvanized	42-62 W	9 500 lm (62 W)	4000 K, CRI > 80	26	16
221005 835 10 1005 M	ecoLENS Industry, 840, Galv, 5x2,5 mm ²	Asymmetric	Galvanized	42-62 W	9 500 lm (62 W)	4000 K, CRI > 80	26	16
221005 840 10 1006 M	ecoLENS Industry, 840, Galv, 5x2,5 mm ²	Flood 110°	Galvanized	42-62 W	9 500 lm (62 W)	4000 K, CRI > 80	26	16

Caleidoscope