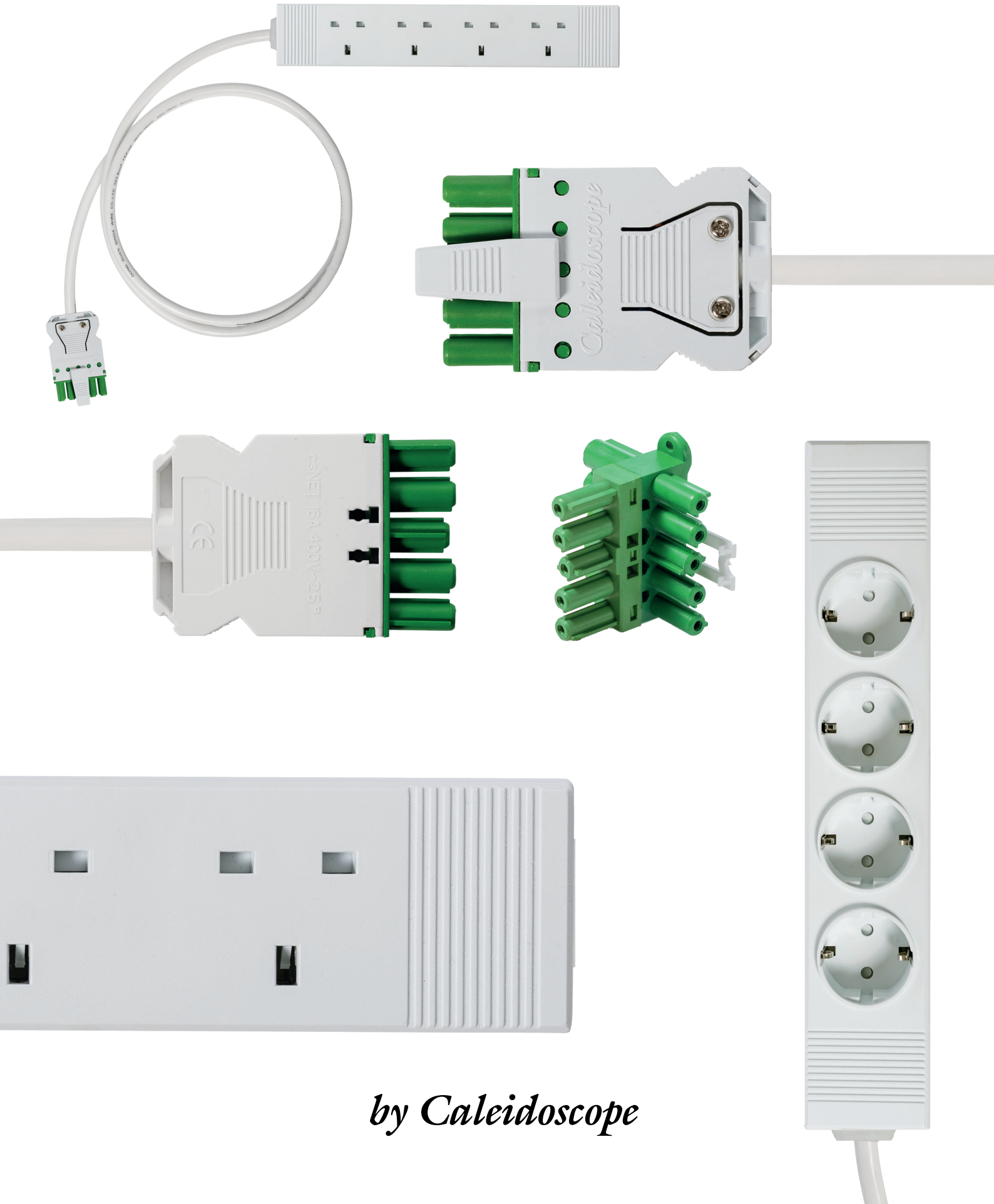


csNET™ Power System



by Caleidoscope

csNET™ Power System with 4-way socket

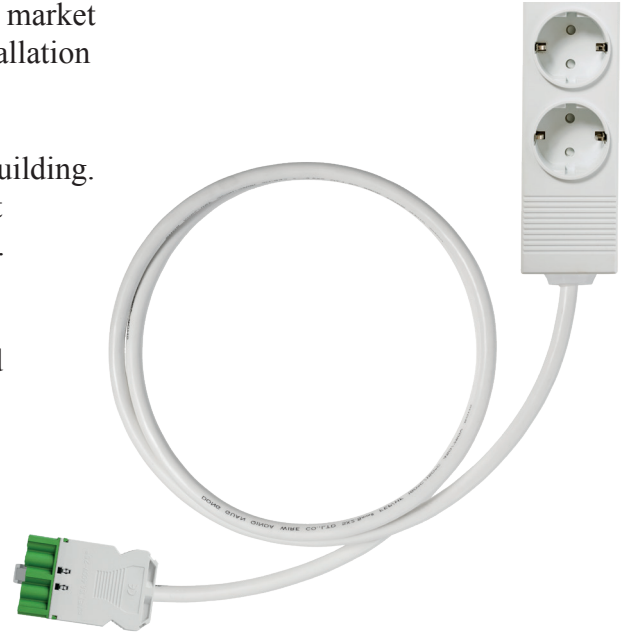
The prefabricated modular power cable system provide the market with a “plug`n play” 4-way socket system of a leading installation time.

The system is suitable for small to large stores and office building. As no electrical waste is produced during the installation at the building site it save both money and material recourses.

The system is a 3-phase system with 5 x 2,5 mm² cables in halogen free material as a standard for maximum 16 A load on each phase.

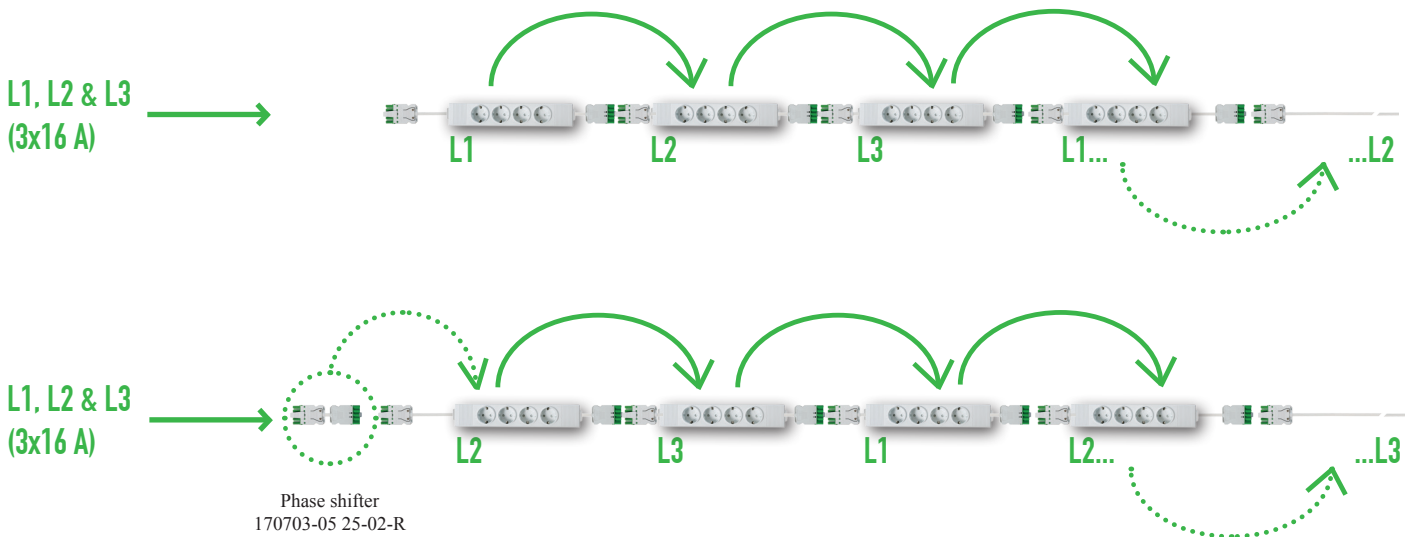
The system is approved according to EN 61535.

Both UK (3-pin british standard) and European socket



Phase rotating sockets – Simple and easy

The socket boxes have internal phase rotation, which means that each installed socketbox will be installed in a forwarding direction of the phases. The first connected box will be on the phase L1, second on the L2 and third on the L3.



With a phase shifter (item 170703-05 25-02-R) you may step one phase forward if required.

Design

The slim design of the box is made to fit in a variation of applications and is easily placed directly in the grid profile or fixed on a special bracket into the grid profile with plastic plugs.

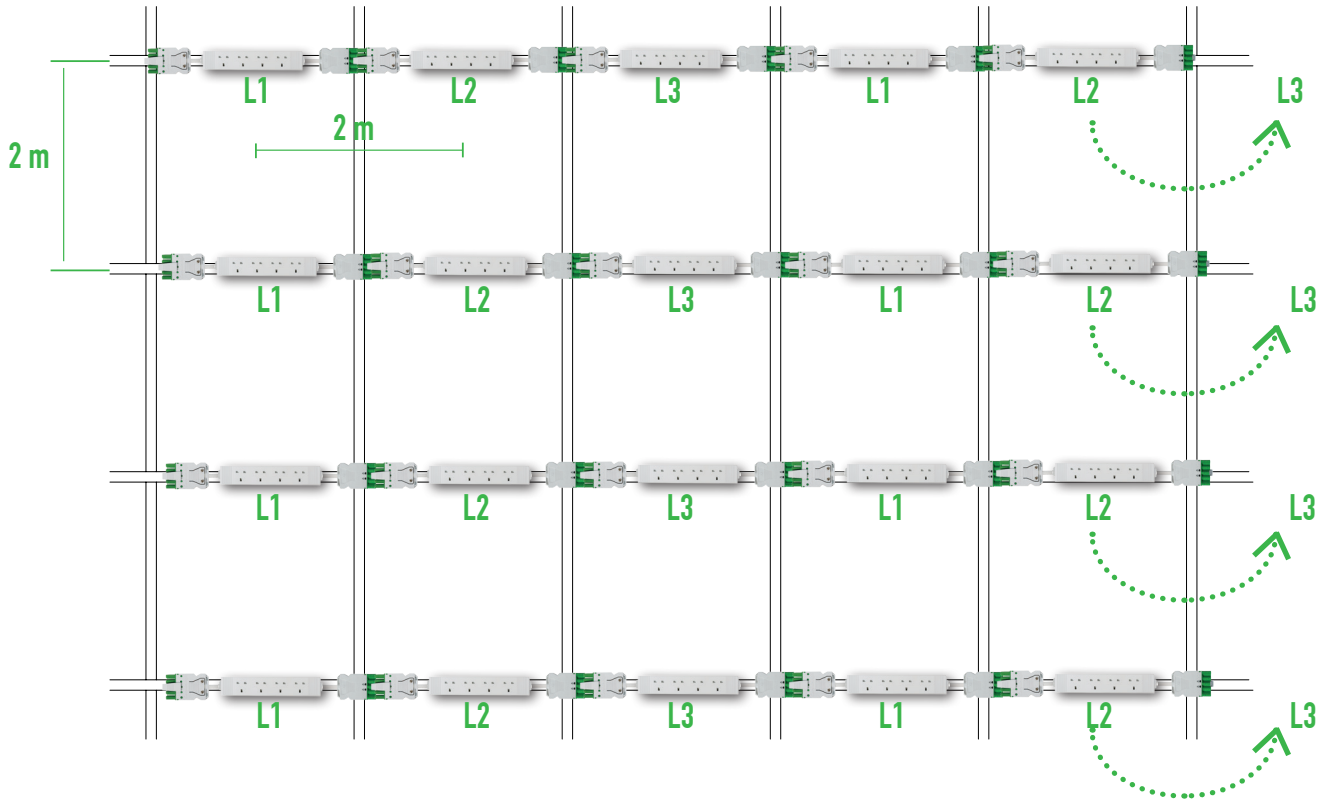
The socket system is designed with 2 meter cable in each end, but can be customized in different length on request.

How to use socket inside the grid ceiling?

The power outlets can be installed very easy inside the grid profile. The csNET socket system can be supplied as standard with 4 different distributions, A, B or C depending on your requirements. Other distribution alternatives upon request.

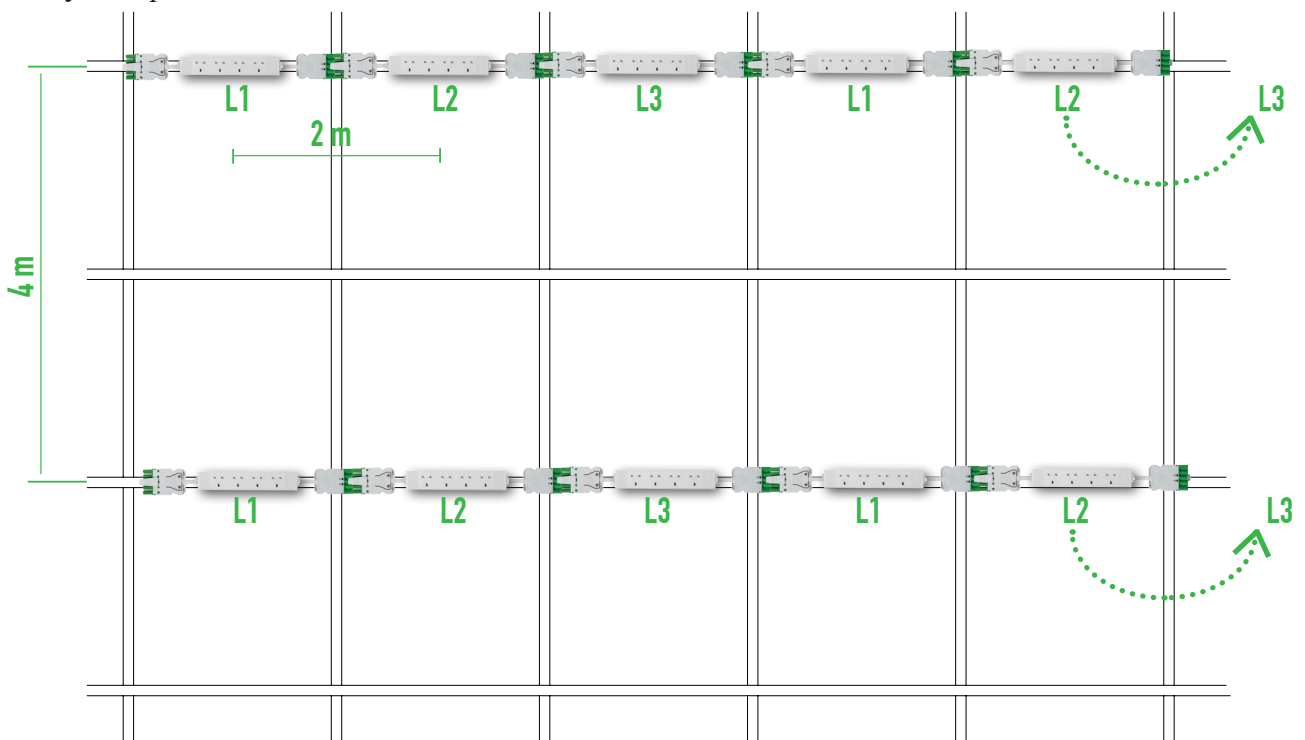
A. 1 pcs socket / 4 m²

4-way socket equipped with 1,0 meter lenght cable in each end gives c/c 2 meter on the socket. System placed in each row of lines in c/c 2 meter.



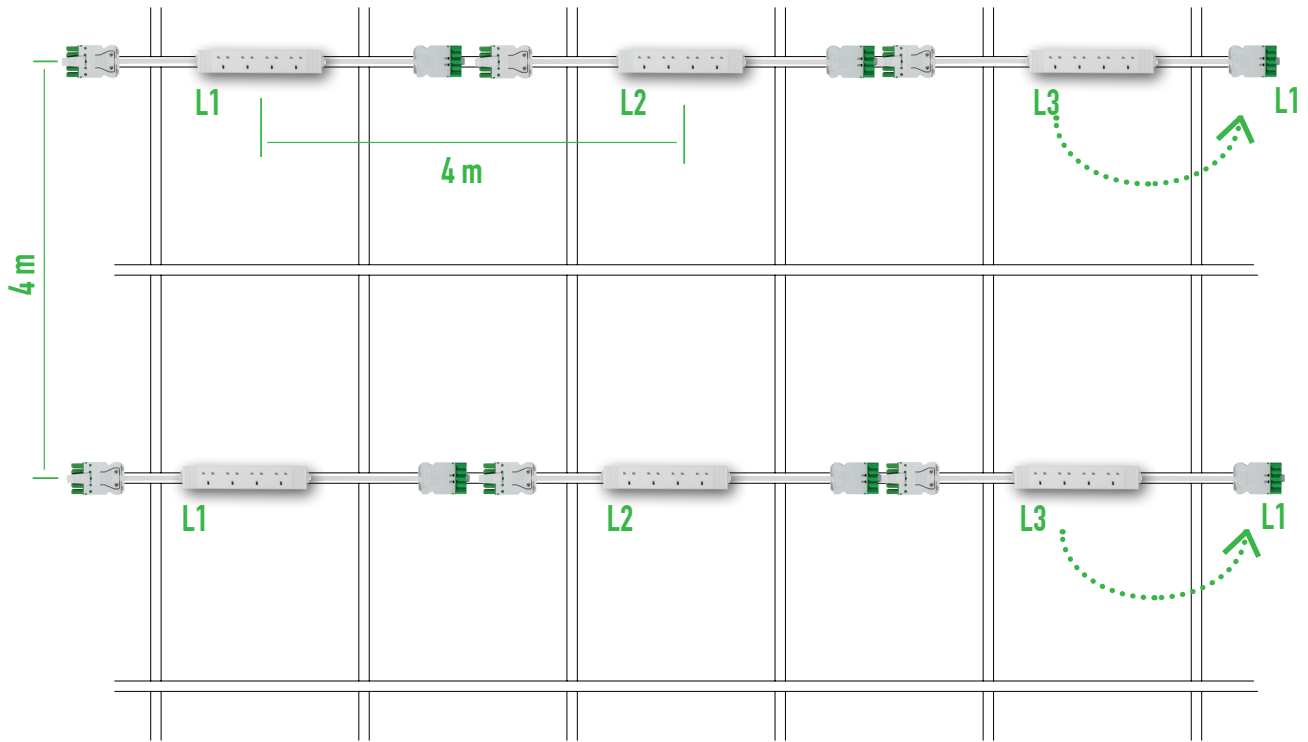
B. 1 pcs socket / 8 m²

4-way socket equipped with 1,0 meter lenght cable in each end gives c/c 2 meter on the socket. System placed in each 2nd row of lines in c/c 4 meter.



C. 1 pcs socket / 16 m²

4-way socket equipped with 2,0 meter lenght cable in each end gives c/c 4 meter on the socket.
System placed in each 2nd row of lines in c/c 4 meter.



csNET™ 4 way socket with cable



X = m

4-way european shucko outlets with integrated 5x2,5 mm² halogen free cable system and Caleidoscope csNET quickconnector approved according to EN 61535.

Built-in phase rotation.

For fast and easy installation of socket into different recessed ceiling types, cable trays or luminaire support system.

Easy installation into different types of brackets support without any screws connection.

Material

Polyamide 66

Cable type

5 x 2,5 mm² HF

Approved standard

EN 61535: 2009+A1
IEC 60884:2002 +A1+A2,
SS 428 08 34:2013
RoHS tested

Flammability rating

UL 94 V-2

Rated voltage
Nominal current (socket)
Form protection

250 V
10 A
IP20

Fixing plug, White

2 pcs included / each socket



Item No.	Description	Painting colour	Cable length	Picture
170703-05 25-40-EU	csNET 4-WAY EU-socket, 4,0 x 5 x 2,5 mm ² , HF	White, RAL 9010	X = 4,0 m	
170703-05 25-20-EU	csNET 4-WAY EU-socket, 2,0 x 5 x 2,5 mm ² , HF	White, RAL 9010	X = 2,0 m	
170703-MBV	csNET Mounting Bracket F. fixPOiNT, Vertical, White	White, RAL 9010	N/A	
170703-MBH	csNET Mounting Bracket F. fixPOiNT, Horizontal, White	White, RAL 9010	N/A	
170703-FP	csNET Fixing Plug, White, 4-way outlet (2 pcs)	White, RAL 9010	N/A	

Caleidoscope

csNET™ 4 way socket with cable, Endbox



X = m

4-way european shucko outlets with integrated 5x2,5 mm² halogen free cable system and Caleidoscope csNET quickconnector approved according to EN 61535.

Endbox to be used as last outletbox in circuit.

For fast and easy installation of socket into different recessed ceiling types, cable trays or luminaire support system.

Easy installation into different types of brackets support without any screws connection.

Material	Polyamide 66
Cable type	5 x 2,5 mm ² HF
Approved standard	EN 61535: 2009+A1 IEC 60884:2002 +A1+A2, SS 428 08 34:2013 RoHS tested
Flammability rating	UL 94 V-2
Rated voltage	250 V
Nominal current (socket)	16 A
Form protection	IP20
Fixing plug, White	2 pcs included / each socket



Item No.	Description	Painting colour	Cable length	Picture
170703-05 25-20-EUB	csNET 4-WAY EU-socket End Box, 2,0 x5 x2,5 mm2, HF	White, RAL 9010	2,0 m	
170703-05 25-10-EUB	csNET 4-WAY EU-socket End Box, 1,0 x5 x2,5 mm2, HF	White, RAL 9010	1,0 m	
170703-MBV	csNET Mounting Bracket F. fixPOiNT, Vertical, White	White, RAL 9010	N/A	
170703-MBH	csNET Mounting Bracket F. fixPOiNT, Horizontal, White	White, RAL 9010	N/A	
170703-FP	csNET Fixing Plug, White, 4-way outlet (2 pcs)	White, RAL 9010	N/A	

Caleidoscope

csNET™ 5x2,5 mm², HF cable, female/male



Caleidoscope csNET modular cable system for fast and easy installation into different recessed ceiling types, cable trays or luminaire support system.

Cable length from 2 to 10 meters with pre-assembled Caleidoscope csNET female and male connectors.

5 x 2,5 mm² Halogenfree cable.

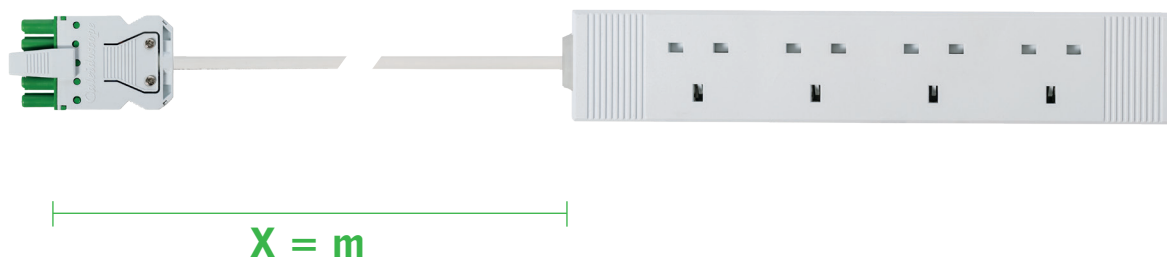
Material	Polyamide 66
Cable type	5 x 2,5 mm ² HF
Approved standard	EN 61535: 2009+A1 RoHS tested
Flammability rating	UL 94 V-2
Rated voltage	250 V
Nominal current	16 A
Form protection	IP20



Item No.	Description	Painting colour	Cable length	Picture
170703-05 25-20	csNET Cable 2,0 M 5x2,5 mm ² F/M Halogen Free	White	2,0 m	
170703-05 25-30	csNET Cable 3,0 M 5x2,5 mm ² F/M Halogen Free	White	3,0 m	
170703-05 25-40	csNET Cable 4,0 M 5x2,5 mm ² F/M Halogen Free	White	4,0 m	
170703-05 25-60	csNET Cable 6,0 M 5x2,5 mm ² F/M Halogen Free	White	6,0 m	
170703-05 25-80	csNET Cable 8,0 M 5x2,5 mm ² F/M Halogen Free	White	8,0 m	
170703-05 25-100	csNET Cable 10,0 M 5x2,5 mm ² F/M Halogen Free	White	10,0 m	

Caleidoscope

csNET™ 4 way socket (UK) with cable, Endbox



4-way 3-pin outlet (British standard) outlets with integrated 5x2,5 mm² halogen free cable system and Caledoscope csNET quickconnector approved according to EN 61535.

Endbox to be used as last outletbox in circuit.

For fast and easy installation of socket into different recessed ceiling types, cable trays or luminaire support system.

Easy installation into different types of brackets support without any screws connection.

Material	Polyamide 66
Cable type	5 x 2,5 mm ² HF
Approved standard	EN 61535: 2009+A1 BS 1363-2 RoHS tested
Flammability rating	UL 94 V-2
Rated voltage	250 V
Nominal current	13 A
Form protection	IP20
Fixing plug, White	2 pcs included / each socket



Item No.	Description	Painting colour	Cable length	Picture
170703-05 25-20-UKB	csNET 4-WAY UK-socket End Box, 2,0 x5 x2,5 mm2, HF	White, RAL 9010	2,0 m	
170703-05 25-10-UKB	csNET 4-WAY UK-socket End Box, 1,0 x5 x2,5 mm2, HF	White, RAL 9010	1,0 m	
170703-MBV	csNET Mounting Bracket F. fixPOiNT, Vertical, White	White, RAL 9010	N/A	
170703-MBH	csNET Mounting Bracket F. fixPOiNT, Horizontal, White	White, RAL 9010	N/A	
170703-FP	csNET Fixing Plug, White, 4-way outlet (2 pcs)	White, RAL 9010	N/A	

Caledoscope

csNET™ distribution block



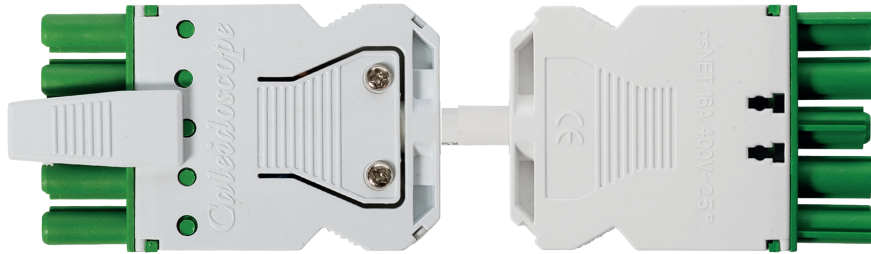
Caleidoscope csNET Distribution block with 1 (one) 5-pole male connector and 2 (two) 5-pole female connector.

Material	Polyamide 66
Approved standard	EN 61535: 2009+A1 RoHS tested
Flammability rating	UL 94 V-2
Rated voltage	250 V
Nominal current	16 A
Form protection	IP20

Item No.	Description	Painting colour	Cable length	Picture
170703-5T	csNET 5-P T-block		N/A	

Caleidoscope

csNET™ phase shifter



Phase shifter with 5-pole male and female connector.

To be used when you need to forwarding 1 phase in the system.

Material	Polyamide 66
Cable type	5 x 2,5 mm ² HF
Approved standard	EN 61535: 2009+A1 RoHS tested
Flammability rating	UL 94 V-2
Rated voltage	250 V
Nominal current	16 A
Form protection	IP20

Item No.	Description	Painting colour	Cable length	Picture
170703-05 25-02-R	csNET Cable 0,2 M 5x2,5 mm ² F/M HF- Phase rotated		0,2 m	

Caleidoscope

csNET™ 4 way socket (UK) with cable



X = m

4-way 3-pin outlet (British standard) with integrated 5x2,5 mm² halogen free cable system and Caleidoscope csNET quickconnector approved according to EN 61535.

Built-in phase rotation.

For fast and easy installation of socket into different recessed ceiling types, cable trays or luminaire support system.

Easy installation into different types of brackets support without any screws connection.

Material

Polyamide 66

Cable type

5 x 2,5 mm² HF

Approved standard

EN 61535: 2009+A1
BS 1363-2
RoHS tested

Flammability rating

UL 94 V-2

Rated voltage

250 V

Nominal current

13 A

Form protection

IP20

Fixing plug, White

2 pcs included / each socket



Item No.	Description	Painting colour	Cable length	Picture
170703-05 25-40-UK	csNET 4-WAY UK-socket, 4,0 x 5 x 2,5 mm ² , HF	White, RAL 9010	X = 4,0 m	
170703-05 25-20-UK	csNET 4-WAY UK-socket, 2,0 x 5 x 2,5 mm ² , HF	White, RAL 9010	X = 2,0 m	
170703-MBV	csNET Mounting Bracket F. fixPOiNT, Vertical, White	White, RAL 9010	N/A	
170703-MBH	csNET Mounting Bracket F. fixPOiNT, Horizontal, White	White, RAL 9010	N/A	
170703-FP	csNET Fixing Plug, White, 4-way outlet (2 pcs)	White, RAL 9010	N/A	

Caleidoscope